



FOODI® FOOD PREP SYSTEM
CI090/CI100 Series | Information Booklet



IMPORTANT SAFETY INSTRUCTIONS

PLEASE READ CAREFULLY BEFORE USE • FOR HOUSEHOLD USE ONLY

	Read and review instructions for operation and use.
	Indicates the presence of a hazard that can cause personal injury, death or substantial property damage if the warning included with this symbol is ignored.
	For indoor and household use only.
When using electrical appliances, basic safety precautions should always be followed, including the following:	

⚠ WARNING

To reduce the risk of injury, fire, electrical shock or property damage, basic safety precautions must always be followed, including the following numbered warnings and subsequent instructions. Do not use appliance for other than intended use.

- 1 Read all instructions prior to using the appliance and its accessories.
- 2 Carefully observe and follow all warnings and instructions. This unit contains electrical connections and moving parts that potentially present risk to the user.
- 3 **ALWAYS** exercise care when handling the hand blender attachment. The blades are sharp; handle carefully. **ONLY** grasp the hand blender attachment by the plastic end or shaft. Failure to use care when handling the hand blender attachment will result in a risk of laceration.
- 4 **ALWAYS** exercise care when handling the chopping blades. The blades are sharp; handle carefully. **ONLY** grasp the chopping blade by the shaft. Failure to use care when handling the chopping blade will result in a risk of laceration.
- 5 Hand blender blades and chopping blades are sharp, the chopping blade is loose in container. Handle carefully.
- 6 Before each use, inspect blades for damage. If a blade is bent or damage is suspected, contact SharkNinja to arrange for replacement.
- 7 **DO NOT** attempt to sharpen blades.
- 8 Take your time and exercise care during unpacking and appliance setup. This appliance contains sharp, loose blades that can cause injury if mishandled.
- 9 Take inventory of all contents to ensure you have all parts needed to properly and safely operate your appliance.
- 10 Unplug the appliance from the socket when not in use, before assembling or disassembling parts and before cleaning. To unplug, grasp the plug by the body and pull from the socket. **NEVER** unplug by grasping and pulling the flexible cord.
- 11 Before use, wash all parts that may contact food. Follow washing instructions covered in this instruction manual.
- 12 To protect against the risk of electric shock, **DO NOT** submerge the power base, hand mixer attachment or the chopper processing lid or allow the power cord to contact any form of liquid. Unplug the power base before cleaning.
- 13 Remove any accessories from the hand mixer attachment before washing.
- 14 **DO NOT** use this appliance outdoors. It is designed for indoor household use only.

IMPORTANT SAFETY INSTRUCTIONS

PLEASE READ CAREFULLY BEFORE USE • FOR HOUSEHOLD USE ONLY

⚠ WARNING

To reduce the risk of injury, fire, electrical shock or property damage, basic safety precautions must always be followed, including the following numbered warnings and subsequent instructions. Do not use appliance for other than intended use.

- 15 **DO NOT** operate any appliance with a damaged cord or plug, or after the appliance malfunctions or is dropped or damaged in any manner. This appliance has no user-serviceable parts. If damaged, contact SharkNinja for servicing.
- 16 Extension cords should **NOT** be used with this appliance.
- 17 **DO NOT** allow children to operate this appliance or use as a toy. Close supervision is necessary when any appliance is used near children.
- 18 This appliance is **NOT** intended to be used by people with reduced physical, sensory, or mental capabilities, or lack of experience and knowledge, unless they have been given supervision or instruction concerning use of the appliance by a person responsible for their safety.
- 19 Fully unwind the power cord before use. **DO NOT** allow the unit or the cord to hang over the edges of tables or worktops. The cord may become snagged and pull the appliance off the work surface.
- 20 **DO NOT** allow any part of the unit to contact hot surfaces, including hobs and other heating appliances.
- 21 **ALWAYS** use the appliance on a dry and level surface.
- 22 Keep hands, hair and clothing out of the container when loading and operating.
- 23 **ONLY** use attachments and accessories that are provided with the product or are recommended by SharkNinja. The use of attachments not recommended or sold by SharkNinja may cause fire, electric shock, or injury.
- 24 During operation and handling of the appliance, avoid contact with moving parts.
- 25 **DO NOT** operate the appliance with an empty container.
- 26 **DO NOT** fill containers past the MAX FILL or MAX LIQUID lines.
- 27 **DO NOT** microwave any containers or accessories provided with the appliance.
- 28 **DO NOT** perform grinding operations.
- 29 Before operation, ensure all utensils are removed from containers. Failure to remove utensils can cause containers to shatter and potentially result in personal injury and property damage.
- 30 **NEVER** operate the chopper attachment without the lid in place. **DO NOT** attempt to defeat the interlock mechanism. Ensure the container and lid are properly installed before operation.
- 31 **DO NOT** expose the containers and accessories to extreme temperature changes. They may experience damage.
- 32 **NEVER** leave the appliance unattended while in use.
- 33 **DO NOT** blend hot liquids. Doing so may result in pressure buildup and steam exposure that can pose a risk of the user being burned.
- 34 If you find unmixed ingredients sticking to the sides of the bowl, stop the appliance, remove the blade assembly and use a scraper to dislodge ingredients.
- 35 **DO NOT** remove the power base and lid while the chopping blade is still spinning. Allow the appliance to come to a complete stop before removing the power base and lid.
- 36 Remove the chopping blades from the chopper bowl upon completion of processing. **DO NOT** store ingredients before or after processing them in the bowl with the blades attached. Some foods may contain active ingredients or release gases that will expand if left in a sealed container, resulting in excessive pressure buildup that can pose a risk of injury. For ingredient storage in the vessel, use only the provided lid.

SAVE THESE INSTRUCTIONS

- 37 **DO NOT** process dry ingredients without adding liquid to the hand blender, or chopper attachments. They are not intended for dry blending.
- 38 Keep hands and utensils out of containers while processing to reduce the risk of severe personal injury or damage to the unit. A scraper may be used **ONLY** when the processor is not running.
- 39 Immediately release the power button on the power base in the event that the appliance malfunctions during use.
- 40 Make sure that the chopper lid is securely attached to the chopper bowl before operating the chopper attachment.
- 41 Make sure that the power base is securely attached to the hand mixer attachment, hand blender attachment, or chopper assembly.
- 42 Always ensure the hand mixer accessories are fitted securely in place into the hand mixer attachment before processing.
- 43 **DO NOT** use containers if they are cracked or chipped.
- 44 The maximum wattage rating can be achieved by chopping 190g white kidney beans in the chopper bowl. Other configurations may draw less power. Operation time should **NOT** exceed 15 seconds.
- 45 To avoid contact with steam and hot surfaces, **DO NOT** reach across top of vessel in which you are processing.
- 46 If the appliance overheats, a thermal switch will activate and temporarily disable the motor. To reset, unplug the appliance and allow it to cool for approximately 15 minutes before using again.

PARTS

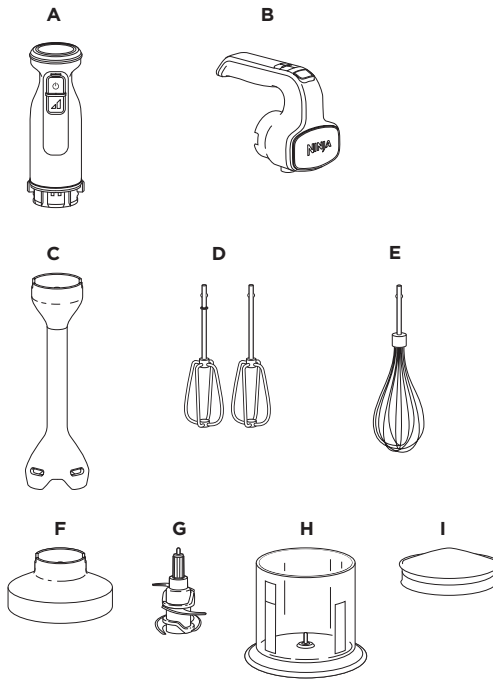
NOTE: Attachments and accessories vary by model.

- A Power Base
(attached power cord not shown)
- B Hand Mixer Attachment
- C Hand Blender Attachment
- D Beater x2
- E Whisk*
- F Chopper Processing Lid*
- G Chopping Blade Assembly*
- H 700ml Chopper Bowl*
- I Chopper Storage Lid*

*Not included with all models

There are a variety of accessories that are compatible with this blender series.

To purchase more accessories and find great recipes, visit ninjakitchen.co.uk.



BEFORE FIRST USE

IMPORTANT: Review all warnings before proceeding


NOTE: Attachments and accessories vary by model.

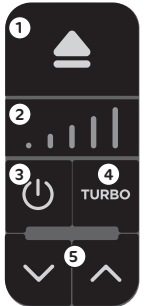
- 1 Remove all packaging materials from the unit. Exercise care when unpacking the hand blender attachment and chopping blade assembly.
- 2 Wash hand blender attachment, beaters, whisk, chopper bowl, storage lid and chopping blade assembly in warm, soapy water. Use a dishwashing utensil with a handle to avoid direct contact with the blades on the hand blender attachment and the chopping blade assembly. Exercise care when handling blade assemblies, as blades are sharp. Thoroughly rinse and air-dry all parts.
- 3 Wipe the power base, hand mixer attachment and chopper processing lid with a clean, damp cloth.

CONTROL PANEL



IMPORTANT: Review all warnings before proceeding

USING THE HAND MIXER CONTROL PANEL

- 1 **EJECT**
Push to remove the beaters or other accessories.
- 2 **SPEED RANGE INDICATOR**
LEDs illuminate to indicate speed settings 1 to 5.
- 3 **POWER**
Press  to turn the unit on or off.
- 4 **TURBO**
Press and **hold** to quickly jump to speed 5.
- 5 **SPEED SELECTOR**
Increase or decrease speed by pressing the up and down arrow buttons.




USING THE HAND BLENDER CONTROL PANEL

- 1 **POWER**
Press  and **hold continuously** to blend. The unit will not blend unless the power button is pressed down.
- 2 **TURBO**
While continuously holding  to blend, press and hold the **TURBO** button to ramp up to high speed. By default, the unit will start on low speed.



USING THE CHOPPER CONTROL PANEL

- 1 **POWER**
Press  and **hold continuously** to process. Use short presses for short pulses and long presses for long pulses.
- 2 The **TURBO** button is **disabled** when using the chopper attachment.



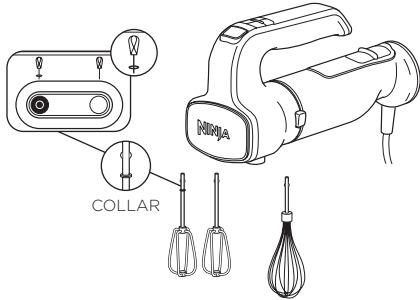
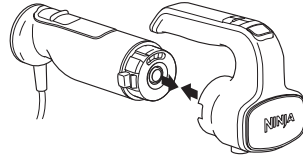
HAND MIXER ATTACHMENT ASSEMBLY

(accessories vary by model)

IMPORTANT:

- Review all warnings before proceeding
- The hand mixer attachment is **NOT** dishwasher safe.

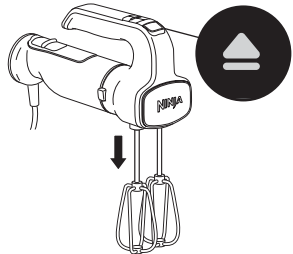
- 1 Install the hand mixer attachment to the power base by aligning the arrow on the power base with the arrow on the mixer attachment. Then, push the power base onto the attachment to lock into place.




- 2 Attach both beaters or the whisk using the accessory slots on the mixer head. Insert the beater with the collar into the slot with the diagram showing a collar. The whisk can be inserted into either slot. You will hear a slight click when locked in place.

- 3 Plug the unit in and power on. The unit will begin mixing on speed 1. Use the speed selector to increase or decrease speed.

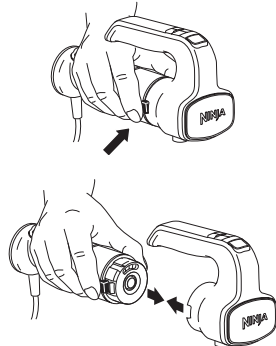
Speeds 1 & 2	Use speeds 1-2 when combining dry ingredients, such as flour, into liquid ingredients.
Speeds 3 & 4	Use speeds 3-4 when making cookie doughs, batters, quick breads, icing and most other recipes.
Speed 5	Use speed 5 for whipping cream, mousse, or egg whites.
NOTE: Start on speed 1, then slowly ramp up to prevent ingredients from splattering.	



- 4 Press  to turn the unit off. To remove the beaters or other accessories, press the eject button. Ensure the beaters or other accessories come to a complete stop before pressing the eject button.

- 5 To remove the power base from the hand mixer attachment, first unplug the unit. Press and hold the release buttons on either side of the power base to remove the mixer attachment.

- 6 Refer to the Care & Maintenance section for cleaning and storage instructions.

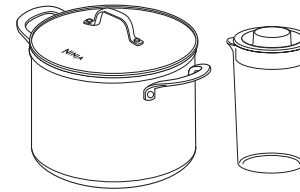
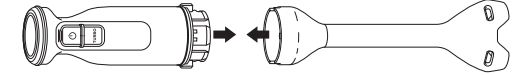


HAND BLENDER ATTACHMENT ASSEMBLY

(accessories vary by model)


IMPORTANT: Review all warnings before proceeding

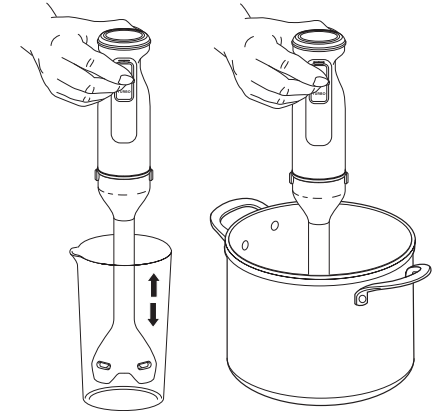
- 1 Install the hand blender attachment to the power base by aligning the arrow on the power base with the arrow on the hand blender attachment. Then, push the power base onto the attachment to lock into place. Plug the unit in.



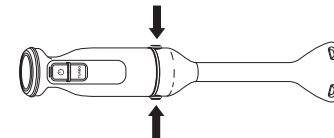
- 2 Prior to blending, make sure to use a container large enough to fully submerge the blender head in ingredients. Once submerged, there should be ample room in the container to avoid overflowing and splashing. A cooking pot*, large measuring container, or the blending jug (not available with all models) is recommended.

***NOTE: DO NOT** blend in non-stick cookware.

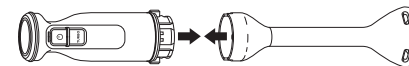
- 3 Submerge the holes of the blender head in the ingredients. Press and **hold** the power button while using an up-and-down motion to blend, making sure to stop blending anytime the blender head is no longer submerged. While continuously holding  to blend, press and **hold** the **TURBO** button to ramp up to high speed.



LOW	Use to blend liquids, such as mayo or dressing, or soups and sauces with soft ingredients, such as tomato sauce.
TURBO	Use for tougher ingredients, such as butternut squash, or for smooth purees, such as houmous.



- 4 To remove the power base from the hand blender attachment, first unplug the unit. Press and hold the release buttons on either side of the power base to remove the hand blender attachment.



- 5 Refer to the Care & Maintenance section for cleaning and storage instructions.

USING THE 700ML CHOPPER (not included with all models)

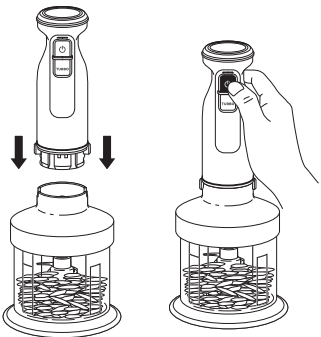
IMPORTANT:


- Review all warnings before proceeding.
- The processing lid is **NOT** dishwasher safe.

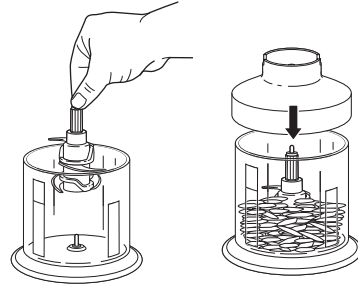
NOTE:

- **DO NOT** add ingredients before completing installation of the blade assembly.
- **DO NOT** operate the chopper continuously for more than 15 seconds at a time.
- **DO NOT** fill past the MAX FILL line.

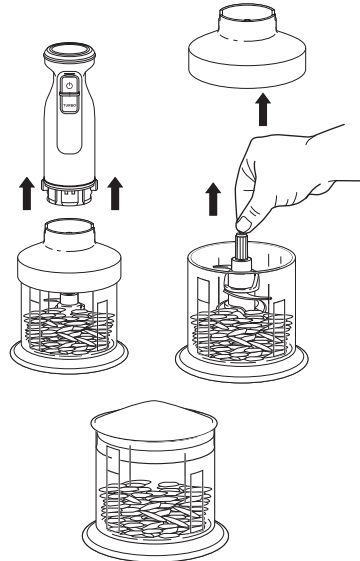
- 1 Place the chopper bowl on a clean, dry, level surface, such as a worktop or table.
- 2 Exercising care, grasp the blade assembly by the top of the shaft and place it onto the drive gear inside the chopper bowl.
- 3 Add ingredients to the chopper bowl, then install the processing lid so it sits into place. Ensure the lid is fully installed prior to use; there will be no click.



- 4 Attach power base by aligning the arrow on the power base with the arrow on the processing lid, then push the power base onto the lid to lock it in place. Plug the unit in.
- 5 Press and **hold** the  button to process. Use short presses for short pulses and long presses for long pulses. The **TURBO** button is **disabled** when using the chopper attachment.



- 6 When finished, unplug the unit. Remove the power base from the chopper attachment by pressing and holding the release buttons on either side of the power base and lifting up.
- 7 Remove the lid by lifting it up. Always remove the blade assembly before emptying ingredients from the bowl by carefully grasping it by the top of the shaft and lifting it out of the bowl.
- 8 **DO NOT** store blended contents with the blade assembly and processing lid attached. Only use the storage lid.
- 9 Refer to the Care & Maintenance section for cleaning and storage instructions.



CARE & MAINTENANCE

WARNING: Handle the chopping blade with care when washing, as the blades are sharp. Contact with the blade's edges can result in laceration.

CLEANING

• Hand-Washing

Wash hand blender attachment, beaters, whisk, chopper bowl, storage lid and blade assembly in warm, soapy water. Use a dishwashing utensil with a handle to avoid direct contact with the blades on the hand blender attachment and the chopping blades. Exercise care when handling blade assemblies, as blades are sharp. Thoroughly rinse and air-dry all parts.

• Dishwasher

All attachments, with the exception of the power base, hand mixer attachment and the chopper processing lid, are top-rack dishwasher safe.

• Motor Base, Hand Mixer Attachment, Chopper Processing Lid

Unplug the power base before cleaning. Wipe the power base, hand mixer attachment and chopper processing lid with a clean, damp cloth. Do not submerge these parts in water.

• STORING

For cord storage, wrap the cord with the plastic clip.

RESETTING THE MOTOR

This unit features a safety system that prevents damage to the motor and drive system should you inadvertently overload it. If the unit is overloaded, the motor will be temporarily disabled. Should this occur, follow the reset procedure below.

- 1 Unplug the unit from the electrical socket.
- 2 Allow the unit to cool for approximately 15 minutes.
- 3 Remove the container's lid and blade assembly. Empty the container and ensure no ingredients are jamming the blade assembly.

IMPORTANT: Ensure that maximum capacities are not exceeded. This is the most typical cause of appliance overload.

ORDERING REPLACEMENT PARTS & ACCESSORIES

To order additional parts and attachments, visit ninjakitchen.co.uk



Blending Jug:

Large jug perfectly designed for the hand blender attachment to blend your favourite recipes.



Dough Hooks:

Glides through the thickest doughs, such as pizza dough.



REGISTER YOUR PURCHASE

 ninjakitchen.co.uk/register-guarantee

 Scan QR code using mobile device

RECORD THIS INFORMATION

Model Number: _____

Serial Number: _____

Date of Purchase: _____
(Keep receipt)

Store of Purchase: _____

TECHNICAL SPECIFICATIONS

Voltage: 220-240V-, 50-60Hz

Power: 850 Watts

**SharkNinja Europe Limited,
3150 Century Way,
Thorpe Park, Leeds, LS15 8ZB, UK
0800 862 0453
ninjakitchen.co.uk**

**SharkNinja Germany GmbH, c/o Regus Management GmbH,
Excellent Business Center 10. + 11. Stock,
Westhafenplatz 1, 60327 Frankfurt am Main, Germany
ninjakitchen.eu**

Illustrations may differ from actual product. We are constantly striving to improve our products, therefore the specifications contained herein are subject to change without notice.

FOODI and NINJA are registered trademarks in the United Kingdom of SharkNinja Operating LLC.

© 2022 SharkNinja Operating LLC
CI090_CI100SeriesUK_IB_MP_220513_Mv3
PRINTED IN CHINA

