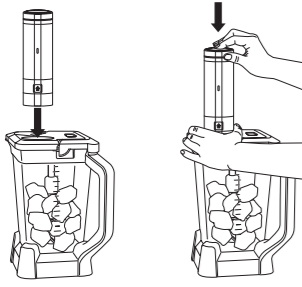
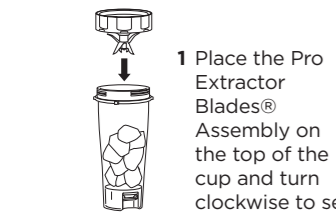
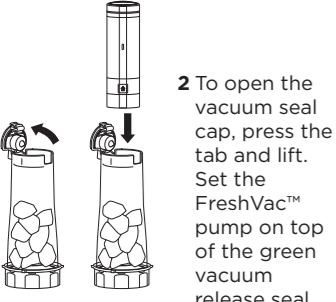
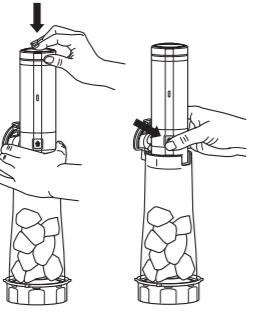
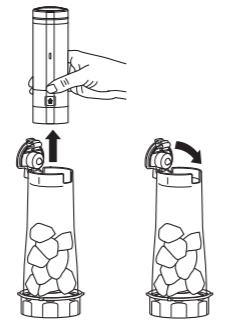


## HOW TO USE YOUR VACUUM BLENDER

### Vacuum Blending with Your Total Crushing Pitcher

- 
- 1 Set the pitcher on a level surface and place the FreshVac™ pump on top of the green vacuum release seal on the lid.
  - 2 To vacuum-seal the pitcher, hold the pump in place over the seal. Press the power button on top of the pump once to begin vacuum-sealing. The light on the pump will illuminate in white while vacuum-sealing is in progress.
  - 3 When vacuum-sealing is complete, the pump will shut off automatically and the green light on the pump will illuminate.
  - 4 To release the pump from the pitcher, press the eject button located on the bottom front of the pump.
  - 5 Blend ingredients as instructed in Total Crushing Pitcher section.
  - 6 When blending is complete, pressure must be released from the pitcher through the green seal before opening the lid.

### Vacuum Blending with Your Single-Serve Cup

- 
- 
- 
- 
- 1 Place the Pro Extractor Blades® Assembly on the top of the cup and turn clockwise to seal.
  - 2 To open the vacuum seal cap, press the tab and lift. Set the FreshVac™ pump on top of the green vacuum release seal.
  - 3 To vacuum-seal the cup, hold the pump in place over the seal. Press the power button on top of the pump once to begin vacuum-sealing. The light on the pump will illuminate in white while vacuum-sealing is in progress.
  - 4 When vacuum-sealing is complete, the pump will shut off automatically and the green light on the pump will illuminate. To release the pump from the cup, press the eject button located at the bottom front of the pump.
  - 5 Close the vacuum seal cap. Press it closed until it clicks into place.

**WARNING:** Handle the blade assemblies with care when washing, as the blades are sharp. Contact with the blades' edges can result in laceration.

**QUESTIONS?** We're here to help. Call **0800 862 0453** or visit [ninjakitchen.eu](http://ninjakitchen.eu)

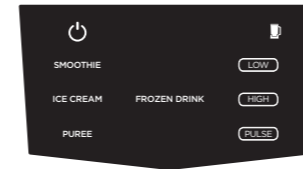
Please make sure to read the enclosed Ninja® Instructions prior to using your unit.

## NINJA® SMART SCREEN BLENDER WITH FRESHVAC™ TECHNOLOGY

### INTELLI-SENSE® TECHNOLOGY

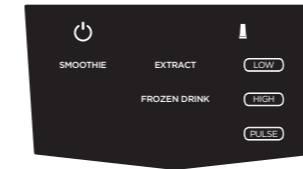
Customized power, speed, and pre-set programs for each attachment. Simply select from specially tailored smart programs on an easy-to-use touchscreen for consistent results with zero guesswork.

#### TOTAL CRUSHING® PITCHER



- SMOOTHIE**  
Fresh/Frozen Fruits  
Milk/Yogurt  
Protein Shakes
- ICE CREAM**  
Sorbet  
Sherbet  
Frozen Yogurt
- PUREE**  
Hummus  
Pesto  
Sauces  
Frozen Yogurt
- FROZEN DRINK**  
Margaritas  
Daiquiris  
Milkshakes

#### SINGLE-SERVE CUP



- SMOOTHIE**  
Fresh/Frozen Fruits  
Milk/Yogurt  
Protein Shakes
- EXTRACT**  
Whole Fruits/Vegetables  
Fibrous Ingredients  
Seeds
- FROZEN DRINK**  
Margaritas  
Daiquiris  
Milkshakes

## CLEANING

**Dishwasher:** The containers, lids, and blade assemblies are all dishwasher safe. The lids and blade assemblies are top-rack dishwasher safe. Ensure the blade assemblies are removed from the containers before placing in the dishwasher.

Before first use, remove the protector from the touchscreen by pulling the "PEEL HERE" tab.

**Hand-washing:** Wash containers, lids, and blade assemblies in warm, soapy water. When washing the blade assemblies, use a dishwashing utensil with a handle to avoid direct hand contact with blades. Handle blade assemblies with care to avoid contact with sharp edges. Rinse and air-dry thoroughly.

**Touchscreen:** Clean touchscreen with a soft dry cloth to avoid scratching. To remove residue from the screen, you may use an all-purpose cleaner.

**WARNING:** Always unplug the base before cleaning.

**WARNING:** Handle the blade assemblies with care when washing, as the blades are sharp. Contact with the blades' edges can result in laceration.

**QUESTIONS?** We're here to help. Call **0800 862 0453** or visit [ninjakitchen.eu](http://ninjakitchen.eu)

Please make sure to read the enclosed Ninja® Instructions prior to using your unit.

# NINJA®

## SMART SCREEN BLENDER

### WITH FRESHVAC™ TECHNOLOGY

# QUICK START GUIDE

# TOTAL CRUSHING® PITCHER

## PARTS

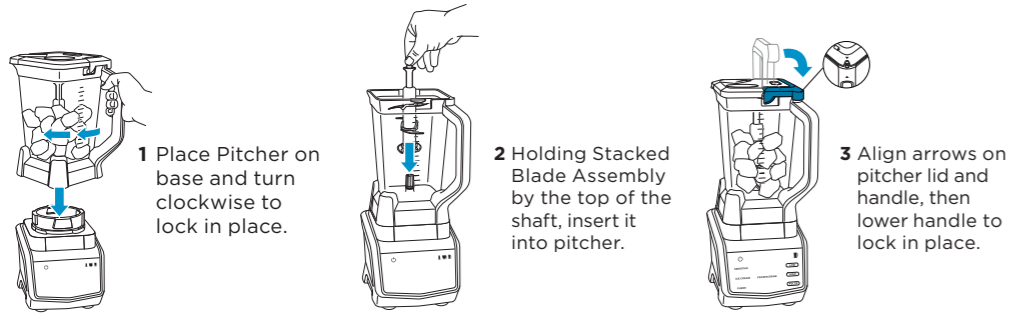


72 OZ. TOTAL CRUSHING® FRESHVAC™ PITCHER

PITCHER LID

CHOPPING BLADE ASSEMBLY

## ASSEMBLY



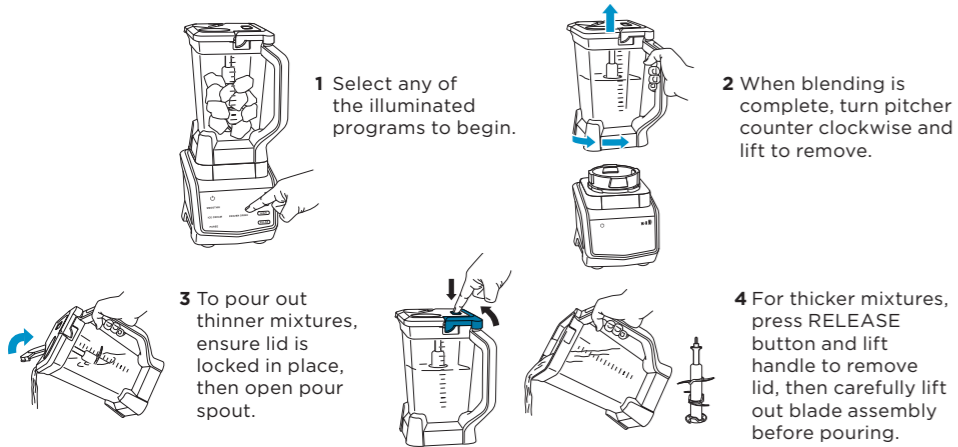
1 Place Pitcher on base and turn clockwise to lock in place.

2 Holding Stacked Blade Assembly by the top of the shaft, insert it into pitcher.

3 Align arrows on pitcher lid and handle, then lower handle to lock in place.

## BLEND & ENJOY

Connect the base to power source. Press the Power symbol. After the unit is turned on, display will flash "1 2 3" until the pitcher is correctly connected to the base.



1 Select any of the illuminated programs to begin.

2 When blending is complete, turn pitcher counter clockwise and lift to remove.

3 To pour out thinner mixtures, ensure lid is locked in place, then open pour spout.

4 For thicker mixtures, press RELEASE button and lift handle to remove lid, then carefully lift out blade assembly before pouring.

Once a container is locked onto base, the program buttons compatible with that container will illuminate.

**WARNING:** Stacked Blade Assembly is sharp and not locked in place. Make sure lid is locked onto pitcher before pouring contents. If pouring without lid, carefully remove blade assembly first. Failure to do so will result in a risk of laceration. Refer to the Ninja® Owner's Guide for additional information.

QUESTIONS? We're here to help. Call 0800 862 0453 or visit [ninjakitchen.eu](http://ninjakitchen.eu)

# SINGLE-SERVE CUP

## PARTS

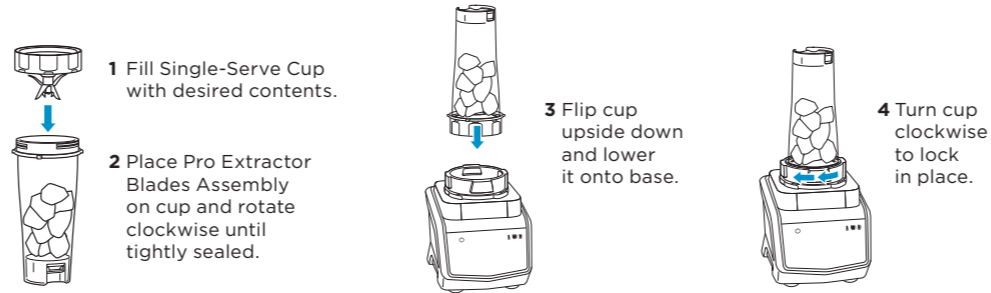


SINGLE-SERVE CUP

FRESHVAC™ SPOUT LID

PRO EXTRACTOR BLADES® ASSEMBLY

## ASSEMBLY



1 Fill Single-Serve Cup with desired contents.

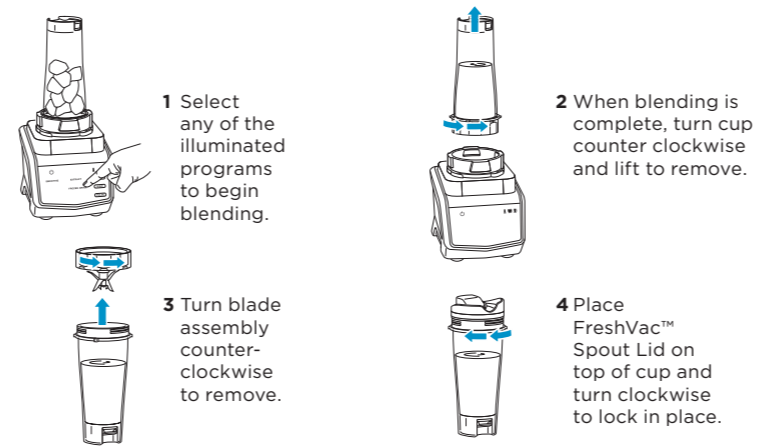
2 Place Pro Extractor Blades Assembly on cup and rotate clockwise until tightly sealed.

3 Flip cup upside down and lower it onto base.

4 Turn cup clockwise to lock in place.

## BLEND & ENJOY

Connect the base to power source. Press and hold Power symbol. After the unit is turned on, display will flash "1 2 3" until the cup is correctly connected to the base.



1 Select any of the illuminated programs to begin blending.

2 When blending is complete, turn cup counter clockwise and lift to remove.

3 Turn blade assembly counter-clockwise to remove.

4 Place FreshVac™ Spout Lid on top of cup and turn clockwise to lock in place.

Once a container is locked onto base, the program buttons compatible with that container will illuminate.

**WARNING:** Handle the Pro Extractor Blades Assembly with care, as the blades are sharp.

QUESTIONS? We're here to help. Call 0800 862 0453 or visit [ninjakitchen.eu](http://ninjakitchen.eu)

# NOTES