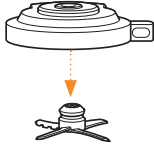


Cleaning & Disassembly

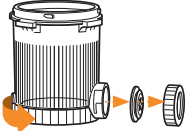
Clean After Each Use



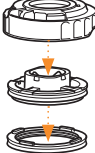
- Release the paddle from the outer bowl lid by pulling back on the paddle latch.

TIP

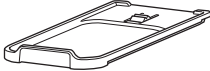
Use a brush to help clean the smaller areas



- Remove the dispense lid. You do not need to press the blue latch to remove the lid from the tub. Twist the tub base so it's in the OPEN position.
- Twist off the nozzle and run warm soapy water through the tub and nozzle to remove any ice cream residue.

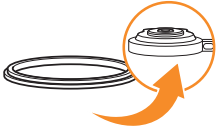


- Remove nozzle gasket from nozzle for deep cleaning.
- Ensure tub base is open during dishwash
- Release the swirl press from the dispensing lid by pulling back on the latch.
- Remove the swirl press gasket after each use to remove trapped ice cream

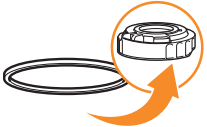


- When reinstalling the Swirl Press gasket, ensure the 4 tabs are facing upward and align with the 4 notches.
- Remove the drip tray by pulling it all the way out from the unit. Be sure to clean after each use before storing.

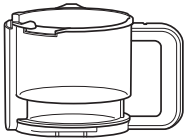
Periodic Cleaning



- For a deeper clean, remove the gasket from the tub lid.



- Remove the gasket from the dispensing lid for a deeper clean.



- Remove the tub from the outer bowl to rinse and remove any remaining residue.

All parts are dishwasher safe and can be hand washed.

Storing Leftovers

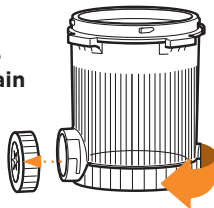
SCOOP

Didn't finish your Swirl Tub? Flatten the top of your frozen treat with a spoon or spatula before refreezing. If the treat is hard after refreezing, process it again on the program you used to make it. If it's soft, just scoop and enjoy it.

NOTE: If your treat contains mix-ins, processing again will further crush your mix-ins and create a new flavour.

SOFT SERVE

If you've already dispensed some of the ice cream, make sure to close the tub base, remove the nozzle and clean any ice cream that may remain underneath the white tub base by rinsing the tub with warm water. Re-attach the nozzle and use a spoon or spatula to flatten the top of your frozen treat before re-freezing. Then, process your leftovers again using the same program you used to create your frozen treat.



Helpful Tips & Troubleshooting

If you receive a flashing 'E' error while dispensing, remove the tub. Then follow the below steps, in order to troubleshoot:

Check that the tub base is open.
Check if the nozzle is clogged.
If neither of the above is the issue, remove your tub from the dispense side and RE-SPIN to soften your ice cream for dispensing.

You may hear popping when dispensing ice cream. This is normal and is the sound of trapped air, being released within the tub before dispensing.

You CANNOT dispense and process at the same time. If the tub is installed for dispensing but cannot dispense, make sure the outer bowl is not fully raised in the installed position.

Be sure to read the instructions before processing, to prevent your ice cream from melting. For best results, dispense immediately after processing. If you need help, scan the QR code on top of the unit for more guidance.

For dispensing:

- For best results when dispensing into a bowl, make sure to chill the bowl in the freezer for a few minutes to avoid melting.
- Processed frozen ingredients with a crumbly texture may be harder to dispense. If your creation looks crumbly after processing, RE-SPIN until you achieve a smoother texture.
- When dispensing, it may take at least 10 seconds for the ice cream to come out of the nozzle.
- Take your time when pulling the Soft Serve Handle - a slower speed will give you added control to create the perfect swirl.
- Adding mix-ins when processing can clog the nozzle.

NINJA swirl by CREAMi

13-IN-1 SOFT SERVE & ICE CREAM MAKER

© 2025 SharkNinja Operating LLC.
CREAMi and NINJA are registered trademarks in the United Kingdom of SharkNinja Operating LLC.
NC701EU_UK_QSG_MP_Mv1_250331

Please read the included safety instructions before using Ninja Swirl.

SOFT SERVE



FROZEN YOGHURT



NINJA swirl by CREAMi

13-IN-1 SOFT SERVE & ICE CREAM MAKER

CREAMiFiT



MILKSHAKE



2 x 480ml
Tubs + Lids

for prep,
processing
and storage.

makes 4 cones

Soft Serve
Nozzle

to dispense
perfect cones.

easy to
clean

with BPA-free
dishwasher-safe
parts

Soft Serve
Handle

to control soft serve
dispensing speed.

13 One-Touch
Programs

6 Soft Serve
Programs

Soft Serve Ice Cream
Soft Serve Lite Ice Cream
Frozen Yoghurt
Fruiti
Soft Serve Gelato
CreamiFit

6 Scoop Programs

Ice Cream
Lite Ice Cream
Gelato
Sorbet
Frozen Yoghurt
Milkshake

+ Mix-in
Program



Quick Start Guide



SCAN TO SEE
HOW IT WORKS

Ninja Swirl Program Overview



NOTE: All NC3 and NC5 legacy recipes are to be processed on scoop.

For best results, select the program that best matches the recipe you prepped.

Processing Tools

NOTE: When unboxing the unit for the first time, the paddle is stored in the Outer Bowl. Refer to steps 6 and 7 to locate the paddle.

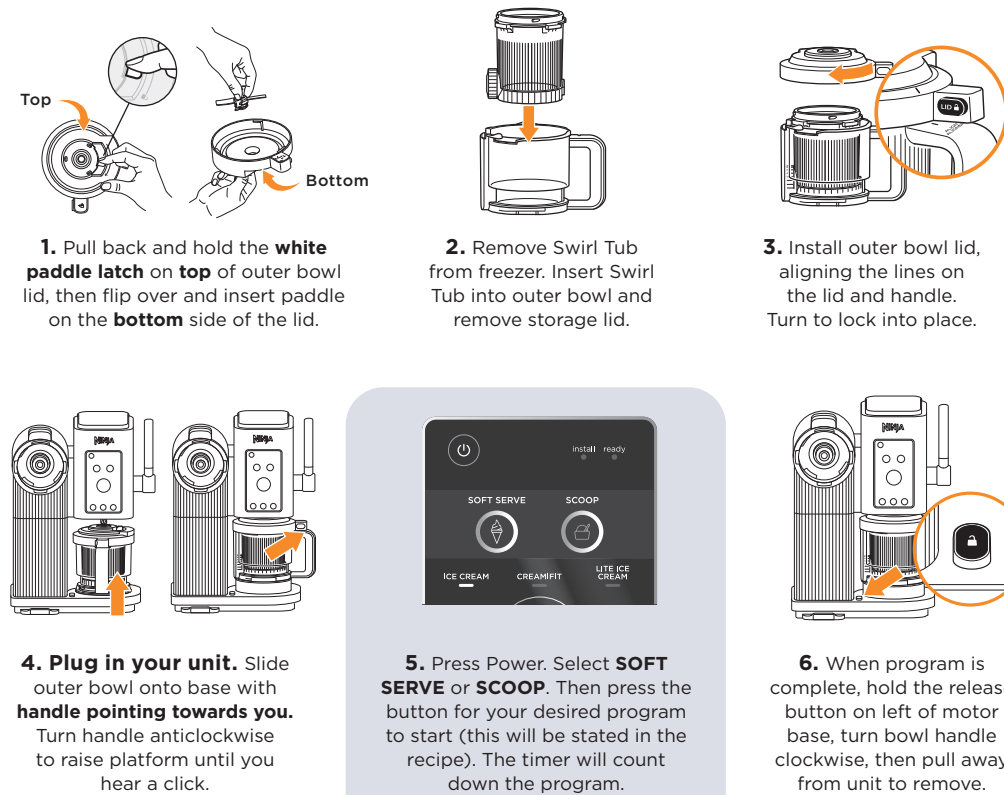


Dispensing Tools



Getting Started with Processing

Refer to the 'Getting Started with Scoop or Soft Serve' recipes in the Inspiration Guide to make your first tub. Don't want to wait 24h, refer to the 'Enjoy Today' recipes in the Inspiration Guide.



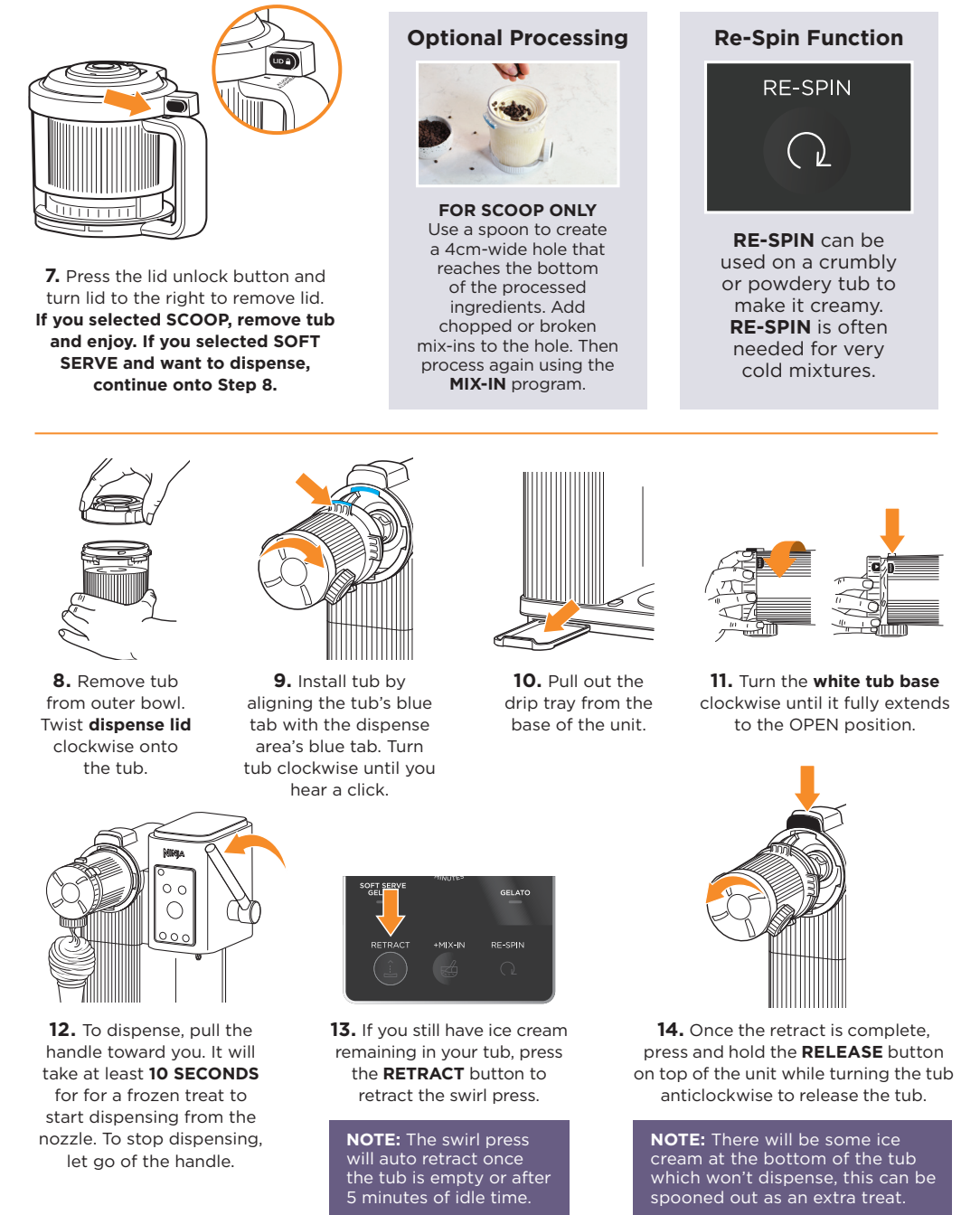
Pick the Right SOFT SERVE

Make sure you choose the correct processing program. Select **SOFT SERVE** plus one of the output programs when using the specified ingredients below:



*than Ninja CREAMi Swirl Ice Cream recipes

Dispensing with SOFT SERVE Program



NOTE: If the Swirl Press retracts on its own and the countdown flashes E, see troubleshooting section.